



Florida Department of Transportation

# Public Information Meeting 180th Street Bridge Replacement

The Florida Department of Transportation (FDOT) invites you to attend a public meeting to discuss the proposed bridge replacement on 180th Street in McAlpin, Florida. Financial Project ID: 439280-1

The FDOT is conducting a Project Development & Environment (PD&E) Study to replace the bridge on 180th Street over Little River. (***See proposed detour map on back***). Two design concepts have been developed and will be presented at the meeting. FDOT encourages you to get involved and is asking the local community for help in identifying their preferred concept.

Public participation is solicited without regard to race, color, national origin, age, sex, religion, disability or family status. Persons who require special accommodations under the Americans with Disabilities Act (ADA) or persons who require translation services (free of charge) should contact Brian Brooker at the number provided on the right, at least seven (7) days before the public meeting.

*Si prefieren recibir esta carta en español, por favor contacte a Esther Murray al (800) 207-8236, extension 5348. Referencia FM 439280-1*



**Concept A**

**Which One?**  
**We Want Your  
Input !**



**Concept B**

**Monday, February 18, 2019**  
**Doors Open: 4:30—6:30 p.m.**

**No Presentation**

**Location:**

McAlpin Community Center  
9981 170th Terrace  
McAlpin, FL 32062

**For More Information Contact:**

Brian Brooker, P.E., Project Manager  
FL Dept. of Transportation  
1109 S. Marion Avenue, MS 2007  
Lake City, FL 32025

Phone: (386) 961-7441 or (800) 749-2967

Email: [brian.brooker@dot.state.fl.us](mailto:brian.brooker@dot.state.fl.us)

Project Website: [www.nflroads.com/180](http://www.nflroads.com/180)



MyFDOTNEFL

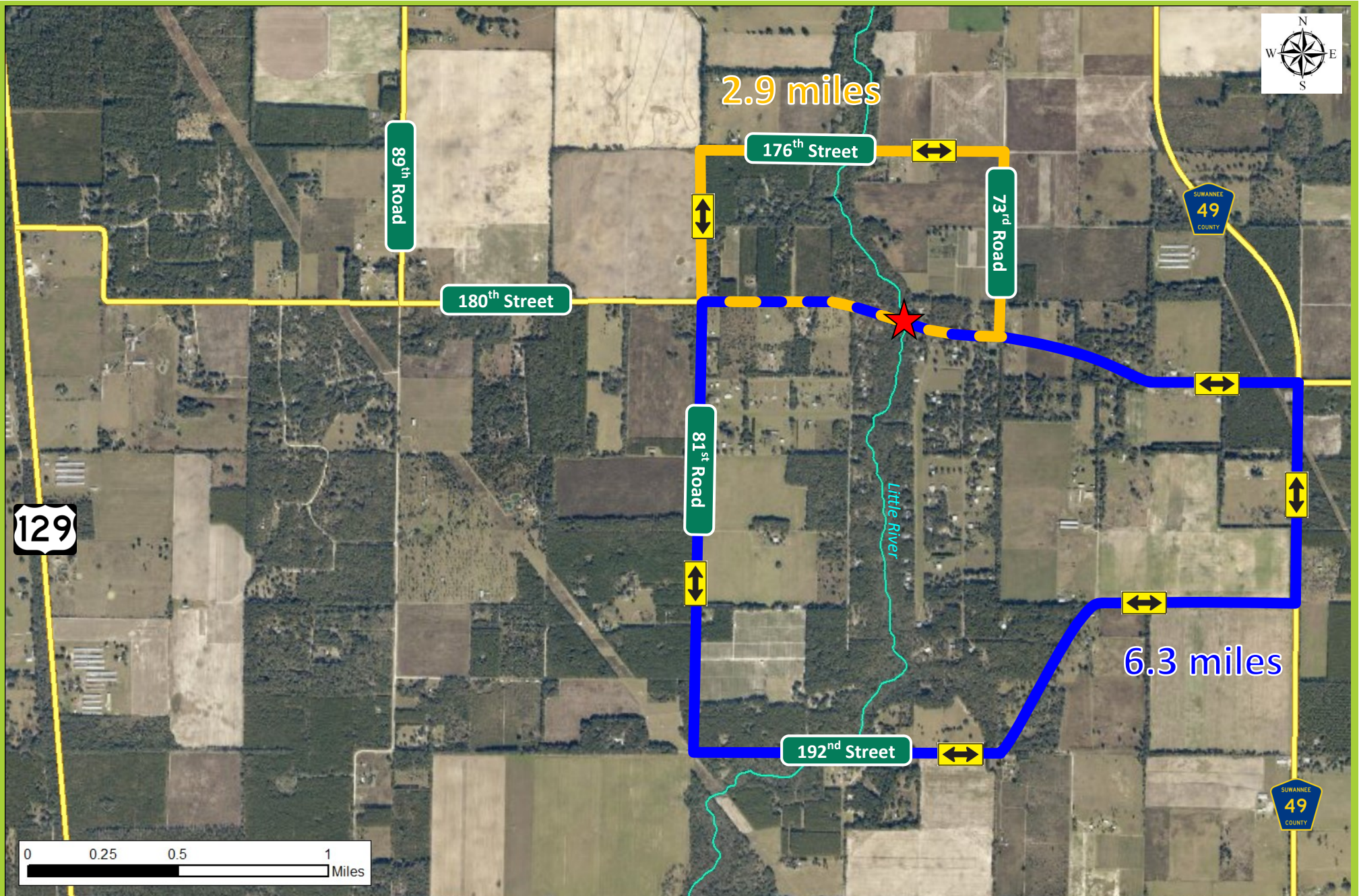


MyFDOT\_NEFL



MyFDOTNEFL





## 180<sup>th</sup> Street Bridge Replacement Potential Detour Routes

### Legend

- Unpaved Detour (2.9 miles)
- Paved Detour (6.3 miles)
- Detour Overlap
- Little River
- Major Roads
- Bridge